

VCE4Plus



Everything you need to prepare, learn & pass your certification exam easily.

Pass Your Next Certification Exam Fast!

365 days free updates. First attempt guaranteed success.

Choose the version that fits your needs	PDF Version	Desktop Test Engine	Online Test Engine
Latest and Up-to-Date exam dumps with real exam questions answers.	✓	✓	✓
Get 12-Months free updates without any extra charges.	✓	✓	✓
Experience same exam environment before appearing in the certification exam.	✗	✓	✓
100% exam passing guarantee in the first attempt.	✓	✓	✓
20% discount on more than one license and 30% discount on 5+ license purchases.	✗	✓	✓
100% secure purchase on SSL.	✓	✓	✓
Completely private purchase without sharing your personal info with anyone.	✓	✓	✓

<http://www.vce4plus.com>

Accurate exam material ensure you pass for sure by your first attempt - VCE4Plus

Exam : **1Y0-200**

Title : **Managing Citrix XenDesktop 7
Solutions Exam**

Vendor : **Citrix**

Version : **DEMO**

NO.1 Scenario: A Citrix Administrator wants to change Provisioning Services from PXE to TFTP. During the migration on a newly created VLAN, the administrator receives the following error: Boot device not found.

Which two DHCP server options should the administrator set so that the virtual machines can start up from the vDisk? (Choose two.)

- A. 60
- B. 66
- C. 67
- D. 69

Answer: B,C

NO.2 Scenario: A user attempts to launch their virtual desktop, "Win7 Desktop," from within Receiver for Web. The virtual desktop fails to launch, and the user receives a notification stating: Cannot start desktop "Win7 Desktop".

Which two methods could a Citrix Administrator use to resolve the issue? (Choose two.)

- A. Close Receiver for Web and then reopen it.
- B. Restart the virtual desktop using Citrix Director.
- C. Install a new SSL Certificate on the StoreFront server.
- D. Right-click the desktop icon within Receiver for Web and select 'Restart'.

Answer: B,D

NO.3 Scenario: A Citrix Administrator is modifying a vDisk.

The administrator finishes making changes to the vDisk and promotes it to production.

Now, only one machine is working with the new vDisk.

In which access mode should the administrator put the vDisk so that multiple target devices can boot from this vDisk?

- A. Test
- B. Private
- C. Standard
- D. Production
- E. Maintenance

Answer: C

NO.4 Scenario: A Citrix Administrator receives complaints that virtual desktops are becoming unresponsive. The current XenServer environment consists of one server that has two 16-core processors and 96 GB of RAM. Dynamic memory control is enabled. Each virtual machine is assigned 2 GB of RAM and 2 vCPUs. Currently, the environment has 65 virtual desktops.

To resolve the issue that users are experiencing, the administrator could add additional _____. (Choose the correct option to complete the sentence.)

- A. NICs
- B. CPUs
- C. storage
- D. memory

Answer: B

NO.5 Users accessing applications hosted on a specific server OS machine are unable to connect to printers from within their sessions. What could be the cause of this issue?

- A. The Universal Print Server is NOT installed.
- B. The universal printer driver policy is disabled.
- C. The auto-create client printer policy is enabled.
- D. The Citrix Print Manager Service is NOT running.

Answer: D

NO.6 Scenario: External users are experiencing issues connecting to Internet applications through NetScaler. Clientless Access is disabled.

Which action should a Citrix Administrator take to investigate the cause of this issue?

- A. View dmesg.boot.
- B. Open NetScaler Plug-in logging.
- C. Configure ACL and TCP logging.
- D. Configure Auditing on the NetScaler.

Answer: B

NO.7 Scenario: A Citrix Administrator implements StoreFront to replace Web Interface in an environment. The IT director wants to upgrade the version of Receiver on all workstations.

Which two components could the administrator use to deploy Receiver? (Choose two.)

- A. StoreFront
- B. Group Policy
- C. AppController
- D. Delivery Controller

Answer: A,B

NO.8 A Citrix Administrator creates a session printer for the Engineering group; however, engineers report that random characters are printed when they print.

Which policy settings could be causing the issue?

- A. Printer assignments
- B. Universal driver preference
- C. Wait for printers to be created
- D. Auto-create generic universal printer

Answer: B

NO.9 Scenario: Target devices are failing to boot properly. A Citrix Administrator tries to restart some of the target devices, but the target devices are stalling at the connecting vDisk stage. The administrator also tries to restart the Provisioning Services servers one at the time, but the issue continues. The administrator notices that the Provisioning Services Streaming Services are starting successfully.

What should the administrator verify next?

- A. The database is reachable.
- B. The DHCP server is reachable.
- C. The write-cache location is reachable.
- D. The vDisk store locations are reachable.

Answer: D

NO.10 Which configuration option should a Citrix Administrator use to keep disconnected sessions open while Citrix Receiver attempts to reconnect automatically?

- A. High Availability
- B. Load Balancing
- C. Session Reliability
- D. Secure Ticket Authority

Answer: C

NO.11 Which two consoles could a Citrix Administrator use to back up a XenDesktop database? (Choose two.)

- A. Citrix Studio
- B. Citrix Director
- C. Citrix XenCenter
- D. SQL Management Studio

Answer: A,D

NO.12 CORRECT TEXT

Scenario: CCH acquired Xirtic, and a Citrix Administrator has created a domain trust between the two organizations. Xirtic has an existing XenDesktop deployment, which consists of a site named Xirtic and one Delivery Controller named XRT01. A Citrix Administrator is tasked with integrating Xirtic's XenDesktop deployment into CCH's XenDesktop deployment. Within CCH's environment, communication to and from XRT01 must go over HTTP and must use port 80.

At the moment, both Xirtic and CCH users log into their respective environments by entering their domains and usernames, for example: domain\username. The administrator has been instructed to ensure users can log in using their usernames only or without the need to authenticate when using Citrix Receiver when possible.

Note the following:

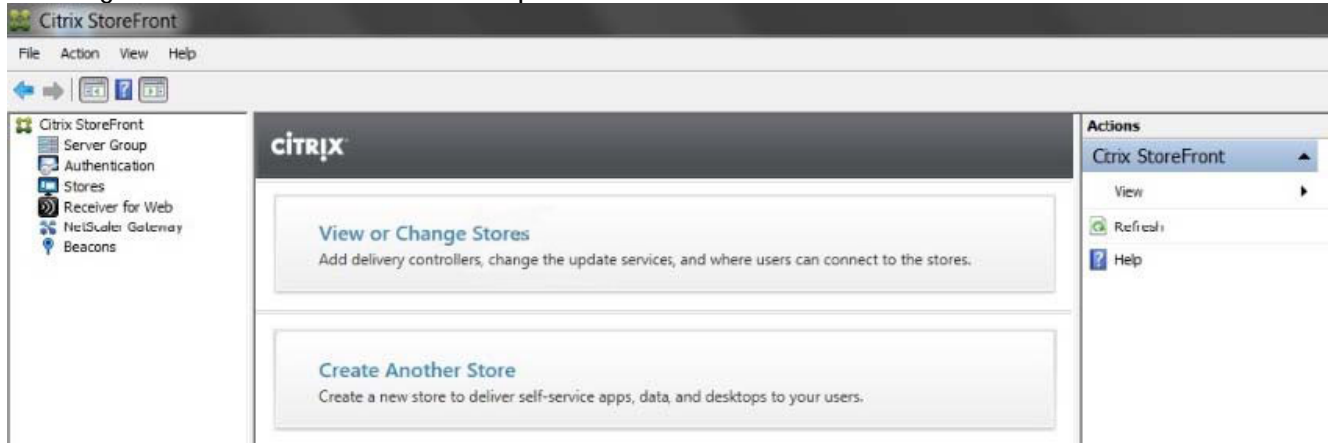
-If a new store is created, the display name of the Delivery Controller in the new store should be "Xirtic". -If a new Delivery Controller is added to the existing store, the display name of the new Delivery Controller should be "Xirtic". -If the Delivery Controller setting in the existing store is modified to merge the CCH and Xirtic

Delivery Controllers, the display name of the Delivery Controller should be "Xirtic". -All systems in the CCH environment are members of the CCH domain. -All systems in the Xirtic environment are members of the Xirtic domain. -Use hostnames only when configuring settings in this simulated environment; do not assume the FQDN.

Tasks:

1. Configure StoreFront to integrate Xirtic's environment into the CCH environment.

2. Configure user access to meet the requirements outlined in the scenario.

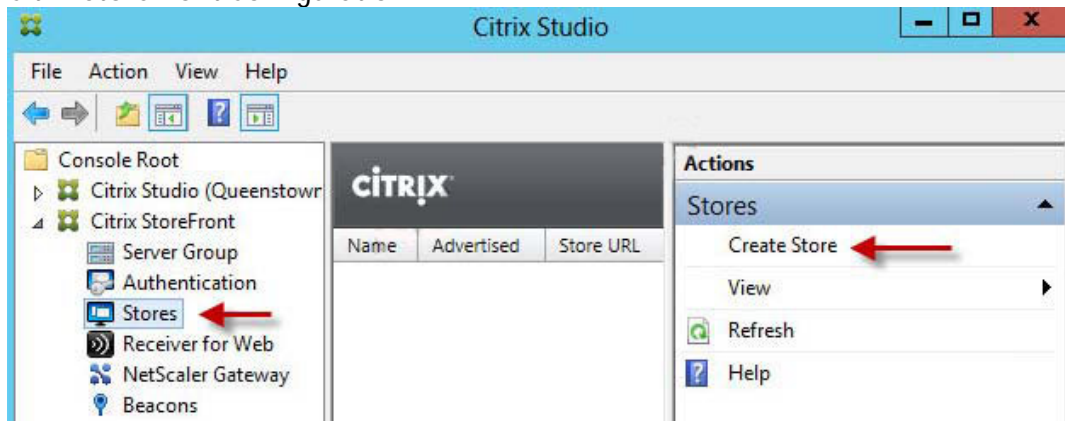


Answer:

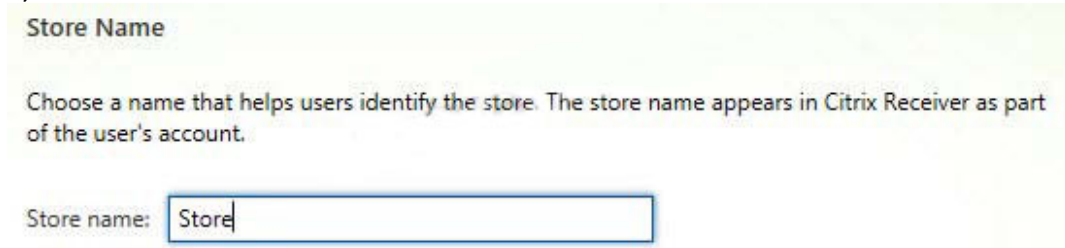
Review the steps and solution in explanation below.

Explanation:

Citrix StoreFront Configuration



1) When the wizard starts enter a store name.



2) Now we need to add the delivery controllers (Controller1) that StoreFront will interface with Add Xirtic here along with Controller1, please use hostname only and not FQDN

Add Delivery Controller

Display name:

Type: XenDesktop
 XenApp
 AppController
 VDI-in-a-Box

Servers (in failover order):

Transport type:

Port:

Remote Access

Add NetScaler Gateway appliances to provide user access from external networks.

Remote access: None
 No VPN tunnel
 Full VPN tunnel

NetScaler Gateway appliances:

Default appliance:

3) Once the store is created it will give you the web browser URL that you can use to access it. Also take note that to access StoreFront from a web browser you must append "Web" to the store URL, as the URL shows below. Don't try going to /Citrix/Store as that won't work.

"Store" Created Successfully

Store available

Use email addresses for account discovery. [Learn more](#)

Website created

Try out the store at <http://d001xd01.contoso.net/Citrix/StoreWeb>.

Citrix Receiver updates

Choose how Citrix Receiver can install updates. [Edit Settings](#)

Add 'Xirtic' to Trusted Domain

Locate the Authentication node, then in the right pane click on Configure Trusted Domains.

Configure Trusted Domains

Configure Trusted Domains

Allow users to log on from: Any domain
 Trusted domains only

Trusted domains:

Default domain: